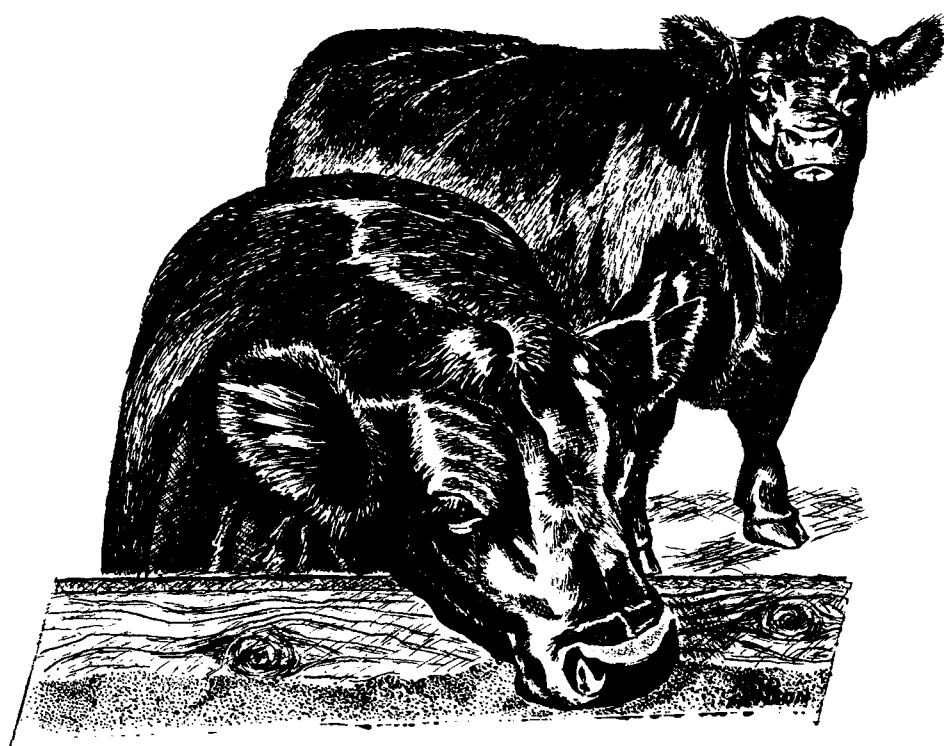


Howdy~

a brief look at

A.C. AGRICULTURE



Big Sandy, Texas

WELCOME TO THE A. C. RANCH

The Ambassador College Agriculture Department was established in 1965. As a part of the College, its motto is "Recapture true values." The Ranch stresses character development and education; pioneering from the ground up. Before we tell you more of our story we wish you a hearty WELCOME and hope you'll tour the Ranch and farm - noting much is still in the developing potential stage.

The Ranch operates on a total of 2500 acres of which 240 acres are in cultivation. The remaining area is pasture and timber land. These acres are all being utilized for experimentation and for providing meat, dairy and vegetable produce for our local College and for the Ambassador College in Pasadena, California.

Special work is being done in the two main areas of soils and plants. We feel certain basic and natural principles in the agriculture field have been lost, overlooked or ignored. In soils we are working to restore varying types of soils to natural fertility and to maintain this fertility by improvement of the ecology of soil micro-biology.

The work under study with plants consists of their ecology in relationship to their economic value. In this study we are not stressing monetary value over a short period of time, but including their value to soil tillage and fertility and to animal life.

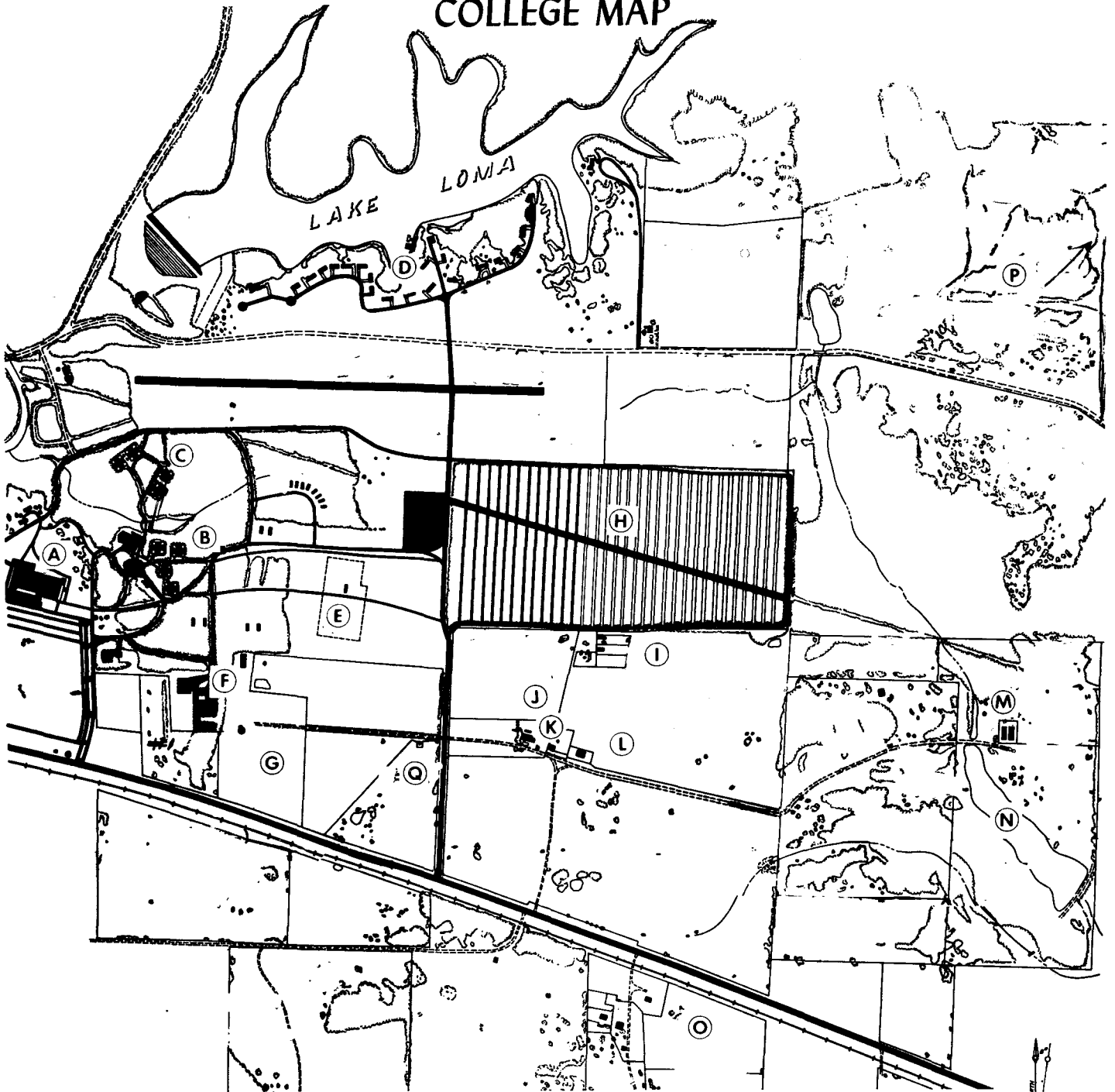
Work being done in our beef program includes disease prevention and health maintenance through proper natural nutrition. Careful selective breeding is being done to improve beef quality and quantity. Emphasis is also being placed on breeding for a high ratio of feed conversion from feed most economical and available to this area.

We feel more attention should be given to promoting the inter-relationship and inter-dependency of the agricultural fields to produce healthy human lives.

Our main enterprises consist of: Beef fattening and beef breeding, Broilers and laying flocks, Field crops, Soils and pastures, Dairy, Sheep, Goats, Turkeys, Horses, Silage and haylage, Greenhouse work, Natural fertilizers and Insect control.

Visitors are welcome to see the operation and to receive information they feel would be helpful to them.

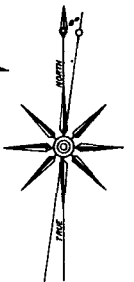
COLLEGE MAP



- Legend -

- (A) Field House
- (B) Women's Dorms
- (C) Men's Dorms
- (D) Faculty Row
- (E) Booth City
- (F) Transportation
- (G) Garden
- (H) Pine Grove

- (I) Poultry Area
- (J) Experimental Plot
- (K) Warehouse, Bins, & Grinder
- (L) Feed Lots & Harvestore
- (M) Greenhouses
- (N) Ranch Recreation Lake
- (O) Location of Sheep, Goats & Turkeys
- (P) Follow Road to Dairy Location
- (Q) Stable Area



For Your Information

- Beef Over 400 beef cattle are regularly maintained on the Ranch. They include Angus, Hereford, and Scottish Highlander. Of special interest will be the new blue Smith Harvestore Silo containing much of the feed to fatten the cattle in the feed lot.
- Dairy A Jersey herd is raised to supply milk for the College.
- Crops In addition to the many pasture grasses raised and harvested, various field crops grown include milo, winter and spring wheat, oats, soybeans, rye, barley and corn.
- Fertilizer Fertilizer is prepared at our own warehouse. It includes diatomaceous earth (KMP) and a mined "organic" material. Our laboratory cultures soil bacteria which is added to our fertilizer for the purpose of helping to restore soil life.
- Food Processing This area receives the raw products produced on the Ranch. It packages and freezes beef and garden vegetables for use by the Ambassador Colleges and faculties here and in Pasadena, California.
- Garden Over 26 different vegetables are grown in the garden. Many of these vegetables are stored in the College fruit cellar and the freezing unit for later use in the dining hall.
- Goats A small herd of Angora goats is kept on our place.
- Greenhouse Two greenhouses specialize in growing fresh, vine ripened tomatoes the year round - again utilized by the College.
- Horses Most of the 12 horses are in the stables and pasture near Highway 80.
- Poultry The Ranch poultry enterprise consists of layers and broilers as well as replacement stock. The breeds include White Rock, white and brown Leghorns.
- Sheep Dorset and Delano Marino sheep are the two types of sheep we have on the A.C. Ranch.
- Turkeys One of the most beautiful sights on the Ranch are the 12 Royal Palm turkeys.